

MTM-3242

3x4 MicroTiles® Configuration with Lightweight Dual-Pole Floor Stand

Color: Black

Weight Cap. per Head 12 lb. | 5.4 kg

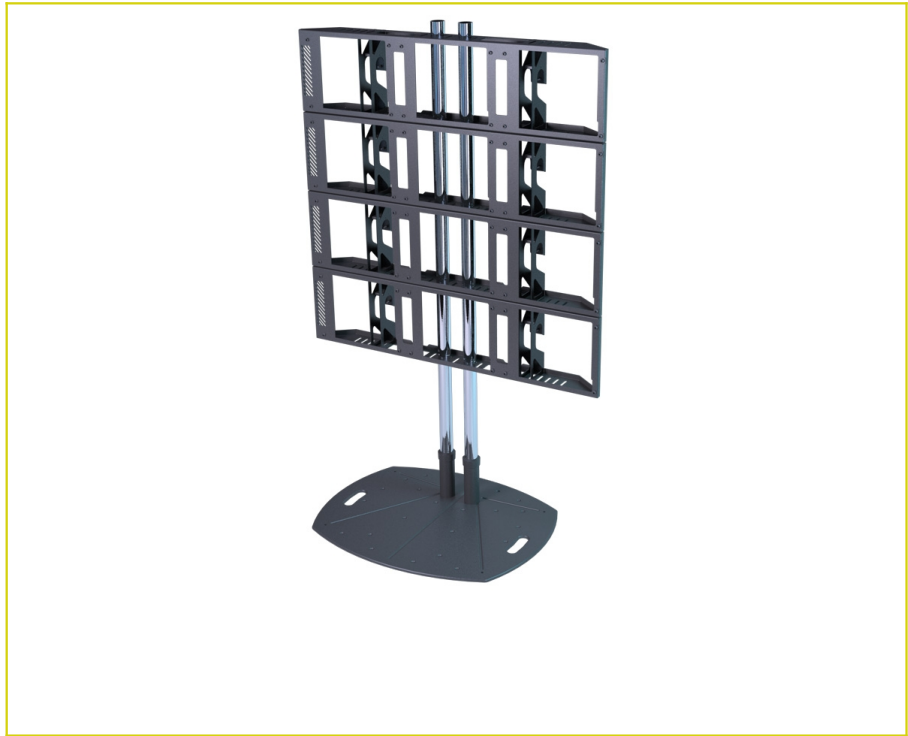
Downloads at Mounts.com



[Data Sheet](#)



[Bid Specification Document](#)



12 lb.

DESCRIPTION

Our 3x1 Christie® MicroTiles® mounting bracket is now available in a floor stand configuration. Four single MicroTiles® brackets (see MTM-3000) placed onto our lightweight dual pole floor stand (see TL-BASE) for a maneuverable and versatile setup for displaying the dynamic, ultra rich-media visual provided by the MicroTiles®.

FEATURES

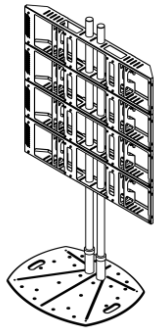
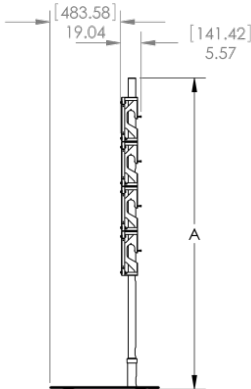
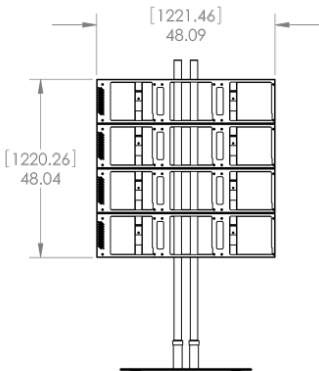
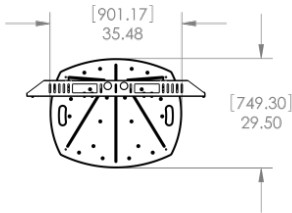
- Base stand includes ergonomic transport handles with lightweight, reinforced design
- Three (3) MicroTiles® can be pre-installed to each MTM-3000 bracket then raised altogether onto the dual pole cart or stand
- MTM-3000 has pre-configured holes to quickly and easily place on Premier Mounts dual pole carts and stands
- Custom products are build-to-order or low stock and subject to qty based pricing and standard lead times of 30 business days, please call for price and lead time

MTM-3242

3x4 MicroTiles® Configuration with Lightweight Dual-Pole Floor Stand

DOWNLOAD FULL SIZE CAD FILES AND DIMENSIONAL DRAWINGS AT MOUNTS.COM

THE INFORMATION CONTAINED IN THIS DRAWING IS THE SOLE PROPERTY OF PREMIER MOUNTS DIVISION OF <PMPI>. ANY REPRODUCTION IN PART OR WHOLE WITHOUT THE WRITTEN PERMISSION OF PREMIER MOUNTS DIVISION OF <PMPI> IS PROHIBITED.



DIM "A"		
POLE LENGTH	IN	MM
60	59.96	1522.98
72	71.96	1827.78
84	83.96	2132.60



MTM-3242

MOUNTS.COM

DIMENSION ARE IN INCH AND [MM]

SCALE: 1:1 SHEET 1 OF 1